



Electoral Commission  
Te Kaitiaki Take Kōwhiri

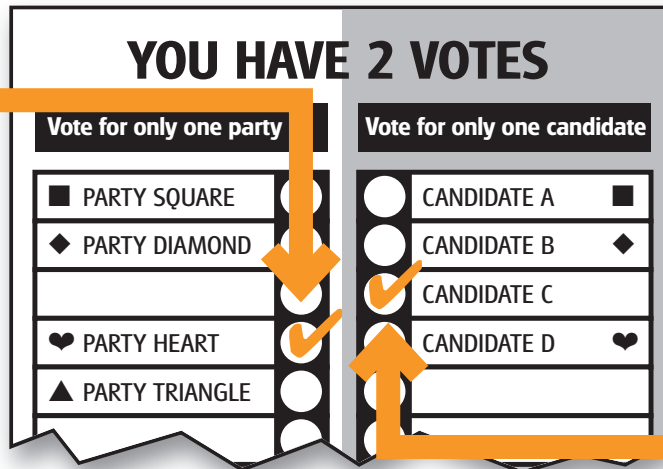
# Two ticks? Too easy!



On Election Day your two votes help decide who will represent us in parliament.  
Your votes do make a difference – here's why...

## Your party vote

helps decide how many seats each party gets in parliament – the government will be formed by one or more parties with the support of enough seats to win important votes in parliament.



## Your electorate vote

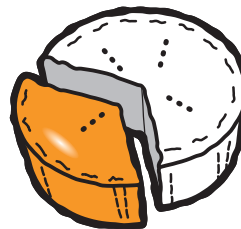
helps decide who becomes your local MP – the candidate who gets the most votes wins the seat.

## How do party votes turn into seats?

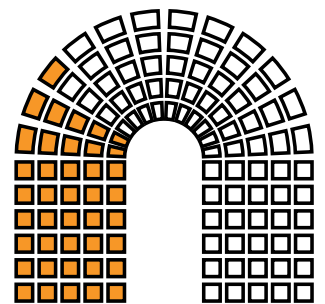
A party needs to win at least **5%** of all the party votes or **1** electorate seat to get seats based on its party vote. This is called the threshold.

Parties getting seats will get a share of seats in parliament close to their share of party votes.

A party's share of seats is filled first by any of its candidates who win electorate seats and then by taking other candidates from the party list.



This proportion of party votes



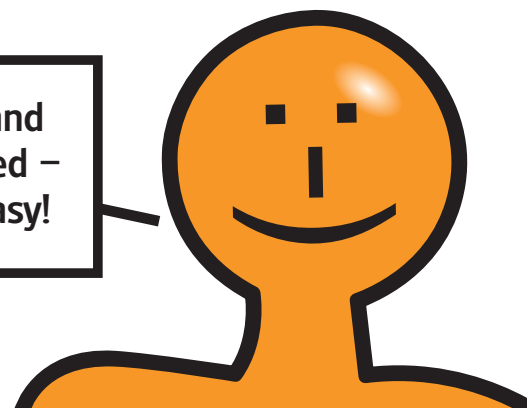
The same proportion of seats in parliament

## Can my electorate vote change a party's total share of seats?

Not usually, **only** when you are in an electorate where:

- A party needs to win your electorate to get any seats because it might get less than 5% of all party votes.
- Winning your electorate will give a party more electorate seats than its share of seats from the party vote. This is called an overhang.
- Your electorate might be won by an independent or candidate from a party not after the party vote.

So vote and be counted – it's too easy!



Visit [www.elections.org.nz](http://www.elections.org.nz) or call 0800 36 76 56 for more information.